

## Description

All Products are manufactured in accordance with ANSI C39.1 1981, (IEC 51) and are CE compliant (CE marked) VU meters are manufactured to comply with ANSI C16.5 1954 - BBC and Bell Spec's.

PR EX models are UL Recognized components, (UL File Number E189308)

## Specifications

### Accuracy:

D.C. Ammeters and Voltmeters: Moving Coil +/- 2% ES  
 A.C. Ammeters and Voltmeters: Iron Vane +/- 2% Rectified +/- 3% ES  
 Frequency: +/- 0.5% of mid frequency

### Frequency:

### Mechanism Type:

D.C. Ammeters and Voltmeters: Moving Coil  
 A.C. Ammeters and Voltmeters: Iron Vane (inherently True RMS)  
 A.C. Ammeters and Voltmeters (rectified): Moving Coil, average sensing  
 Frequency Meters: Moving Coil with zero crossing detector circuit  
 Elapsed Time Meters: Cyclometer Type, non resettable

**Suspension Systems:** All Iron Vane Mechanizms used in the A.C. Ammeters

and Voltmeters utilize ruggedized Pivot and Jewel suspension systems. Rectified Ammeters and Voltmeters, Frequency Meters and all D.C. meter designs combine Taut Band suspension with fluid dampening.

**Response Time:** Less than 3 seconds to indication mark.

**Enclosures:** All models are enclosed to meet IP54 rating (splash proof) of IEC 529. (NEMA 3)

**Temperature:**  
 Operating: 0 to +40 degrees C  
 Storage: -10 to -50 degrees C

### Burden (A.C. Meters):

Ammeters and Voltmeters: Iron Vane 2VA Max  
 Ammeters and Voltmeters: Rectified 0.5VA Max  
 Frequency Meters & ETM: Less than 1VA

## Options

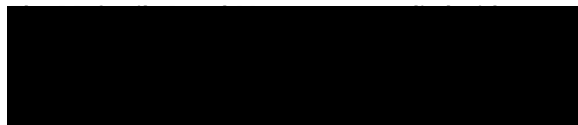
Description	Option Code
<b>Scales:</b>	
Standard rating - non standard scale or - non standard caption	
Custom scaling to customer specs	SX
Red, green or blue line (specify)	SL
Red, green or blue band (specify limits)	SZ
Black dial/white figures and pointers	SB
Black dial/yellow figures and pointers	SY
Mirrored dial plate	MD
White edging on EX front window	W2
Black edging on EX front window	W3
Customer logo (one time charge) Price based on standard one or two colors. Artwork supplied by customer.	SM
No Crompton logo on dial	SN
<b>Calibration/Mechanical:</b>	
Heavily dampened movement	PD
Supplementary red pointer	ER
Illuminated meter (specify D.C. volts)	EL
Rear zero	RZ
Right hand zero reset	BX
Center zero	CZ
Flying lead termination (specify MM)	CZ

## Terminal Resistance (D.C. Meters)

### PR and EX Models

Range	Resistance (+/- 10%)
50µA	2600ohms
100µA	640 ohms
200µA	220 ohms
1mA	35 ohms
50mV	50 ohms (1mA)
Voltmeters	1000 ohms per Volt





Features



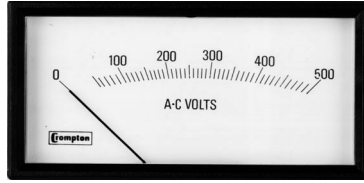
		A	B	C	D	E	F	G	H	I	J	K	L	M	N	O	Panel cut-out
PR 15	in	2.24	1.75	2.16	0.87	0.33	0.63	1.30	1.52	0.25	0.5	1.32	1.31	0.83	0.40	0.17	2.15 x 0.9
	mm	56.9	44.5	54.9	22.1	8.6	15.9	33.0	38.6	6.4	12.7	33.6	33.3	21.1	10.32	4.40	54.6 x 23.7
PR 25	in	3.0	2.27	2.91	1.24	0.40	0.85	1.30	2.12	0.5	0.5	1.88	1.88	1.13	0.52	0.17	2.9 x 1.23
	mm	75.9	57.7	73.9	31.5	10.2	21.6	33.0	53.8	12.7	12.7	47.8	47.8	28.7	13.32	4.40	73.7 x 32.3
PR 35	in	3.70	2.87	3.62	1.55	0.41	0.96	1.30	2.66	0.5	0.5	2.24	2.25	1.44	0.52	0.17	3.61 x 1.60
	mm	94.0	72.9	92.0	39.4	10.4	24.3	33.0	67.6	12.7	12.7	56.8	57.2	36.6	10.32	4.40	91.7 x 40.5
PR 45	in	5.10	3.96	5.02	2.20	0.51	1.39	1.30	2.66	0.5	0.5	4	3.56	1.74	0.52	0.17	5.02 x 2.35
	mm	129.5	100.6	127.5	55.9	12.9	35.2	33.0	67.6	12.7	12.7	101.6	90.45	44.2	10.32	4.40	127.5 x 59.6
PR 55	in	5.85	4.48	5.75	2.5	0.55	1.48	1.30	2.66	0.5	0.5	5.26	4.48	1.60	0.52	0.17	5.78 x 2.59
	mm	148.6	113.8	146.0	63.5	14.0	37.7	33.0	67.6	12.7	12.7	133.6	113.8	40.4	10.32	4.40	146.8 x 65.8

Model	Moving Coil D.C. Micro-ammeters	Moving Coil D.C. Milli-ammeters	Moving Coil D.C. Ammeters	Moving Coil D.C. Milli-Voltmeters	Moving Coil D.C. Voltmeters	Moving Coil D.C. VU Meters
15	PR15-DUA	PR15-DMA	PR15-DAA	PR15-DMV	PR15-DVV	PR15-DVU
25	PR25-DUA	PR25-DMA	PR25-DAA	PR25-DMV	PR25-DVV	PR25-DVU
35	PR35-DUA	PR35-DMA	PR35-DAA	PR35-DMV	PR35-DVV	PR35-DVU
45	PR45-DUA	PR45-DMA	PR45-DAA	PR45-DMV	PR45-DVV	PR45-DVU
55	PR55-DUA	PR55-DMA	PR55-DAA	PR55-DMV	PR55-DVV	PR55-DVU

Model	Moving Coil Rectified A.C. Milliammeters	Moving Coil Rectified A.C. Ammeters	Moving Coil Rectified A.C. Millivoltmeters	Moving Coil Rectified A.C. Voltmeters	Moving Iron A.C. Ammeters	Moving Iron A.C. Voltmeters	Frequency Meters	Elapsed Time Meters	True VU Meters
15	PR15-RMA	N/A	PR15-RMV	PR15-RVV	N/A	N/A	N/A	N/A	PR15-AVU
25	PR25-RMA	PR25-RAA	PR25-RMV	PR25-RVV	PR25-AAA	PR25-AVV	PR25-FRQ	PR25-ETM	PR25-AVU
35	PR35-RMA	PR35-RAA	PR35-RMV	PR35-RVV	PR35-AAA	PR35-AVV	PR35-FRQ	PR35-ETM	PR35-AVU
45	PR45-RMA	PR45-RAA	PR45-RMV	PR45-RVV	PR45-AAA	PR45-AVV	PR45-FRQ	PR45-ETM	PR45-AVU
55	PR55-RMA	PR55-RAA	PR55-RMV	PR55-RVV	N/A	N/A	N/A	N/A	PR55-AVU



# EX Series Indicators

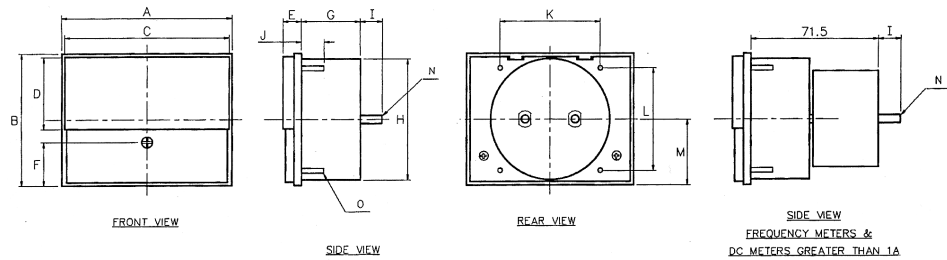


EX Panel Meters are a repeat of the PR Series shown above. They differ in that their primary method of mounting is from the rear of the panel into a cut out prepared to match the size of the meter window.

## Features

- » Window mounted version of PR series
- » Meter window becomes flush with front panel surface

## Dimensions



		A	B	C	D	E	F	G	H	I	M	N	Panel cut-out
EX 15	in	2.24	1.75	2.14	0.93	0.42	0.54	1.30	1.52	0.5	0.82	0.41	2.15 x 0.93
	mm	56.9	44.5	54.4	23.5	10.7	13.7	33.0	38.6	12.7	20.8	10.32	54.6 x 23.7
EX 25	in	3.0	2.27	2.89	1.26	0.44	0.64	1.30	2.12	0.5	1.15	0.41	2.9 x 1.27
	mm	75.9	57.7	73.4	32.0	11.2	16.25	33.0	53.8	12.7	29.2	10.32	73.7 x 32.3
EX 35	in	3.70	2.87	3.60	1.58	0.46	0.81	1.30	2.66	0.5	1.45	0.41	3.61 x 1.6
	mm	94.0	72.9	91.5	40.3	11.8	20.6	33.0	67.6	12.7	36.8	10.32	91.7 x 40.5
EX 45	in	5.10	3.96	5.00	2.33	0.52	0.86	1.30	2.66	0.5	1.79	0.41	5.02 x 2.35
	mm	129.5	100.6	127.2	59.3	13.1	21.85	33.0	67.6	12.7	45.5	10.32	127.5 x 59.6
EX 55	in	5.85	4.48	5.77	2.58	0.52	1.29	1.30	2.66	0.5	1.65	0.41	5.78 x 2.6
	mm	148.6	113.8	146.63	65.6	13.1	32.7	33.0	67.6	12.7	41.9	10.32	146.8 x 65.8

## Product Codes for D.C. Models

Model	Moving Coil D.C. Micro-ammeters	Moving Coil D.C. Milli-ammeters	Moving Coil D.C. Ammeters	Moving Coil D.C. Milli-ammeters	Moving Coil D.C. Voltmeters	Moving Coil D.C. VU Meters
15	EX15-DUA	EX15-DMA	EX15-DAA	EX15-DMV	EX15-DVV	EX15-DVU
25	EX25-DUA	EX25-DMA	EX25-DAA	EX25-DMV	EX25-DVV	EX25-DVU
35	EX35-DUA	EX35-DMA	EX35-DAA	EX35-DMV	EX35-DVV	EX35-DVU
45	EX45-DUA	EX45-DMA	EX45-DAA	EX45-DMV	EX45-DVV	EX45-DVU
55	EX55-DUA	EX55-DMA	EX55-DAA	EX55-DMV	EX55-DVV	EX55-DVU

## Product Codes for A.C. Models

Model	Moving Coil Rectified A.C. Milliammeters	Moving Coil Rectified A.C. Ammeters	Moving Coil Rectified A.C. Millivoltmeters	Moving Coil Rectified A.C. Voltmeters	Moving Iron A.C. Ammeters	Moving Iron A.C. Voltmeters	Frequency Meters	Elapsed Time Meters	True VU Meters
15	EX15-RMA	N/A	EX15-RMV	EX15-RVV	N/A	N/A	N/A	N/A	EX15-AVU
25	EX25-RMA	EX25-RAA	EX25-RMV	EX25-RVV	EX25-AAA	EX25-AVV	EX25-FRQ	EX25-ETM	EX25-AVU
35	EX35-RMA	EX35-RAA	EX35-RMV	EX35-RVV	EX35-AAA	EX35-AVV	EX35-FRQ	EX35-ETM	EX35-AVU
45	EX45-RMA	EX45-RAA	EX45-RMV	EX45-RVV	EX45-AAA	EX45-AVV	EX45-FRQ	EX45-ETM	EX45-AVU
55	EX55-RMA	EX55-RAA	EX55-RMV	EX55-RVV	N/A	N/A	N/A	N/A	EX55-AVU