

CURRENT TRANSFORMER

Model

CTWH5-A-110-T150

Wound primary CT

REGULATORY AGENCY APPROVALS



Manufactured to meet the requirements of ANSI/IEEE C57.13.
Classified by U.L. in accordance with IEC 44-1

APPLICATION:

High accuracy metering and relaying.

FREQUENCY:

50-400 Hz.

MAXIMUM SYSTEM VOLTAGE:

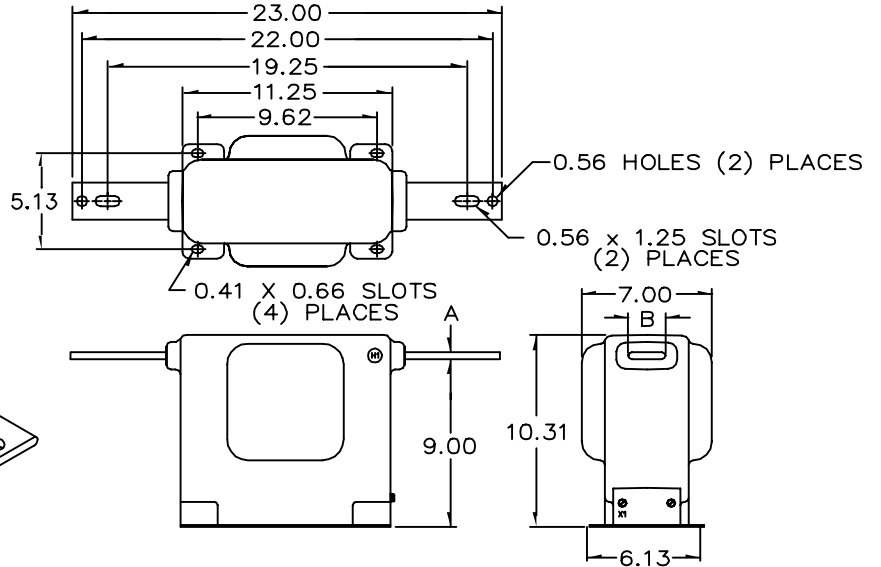
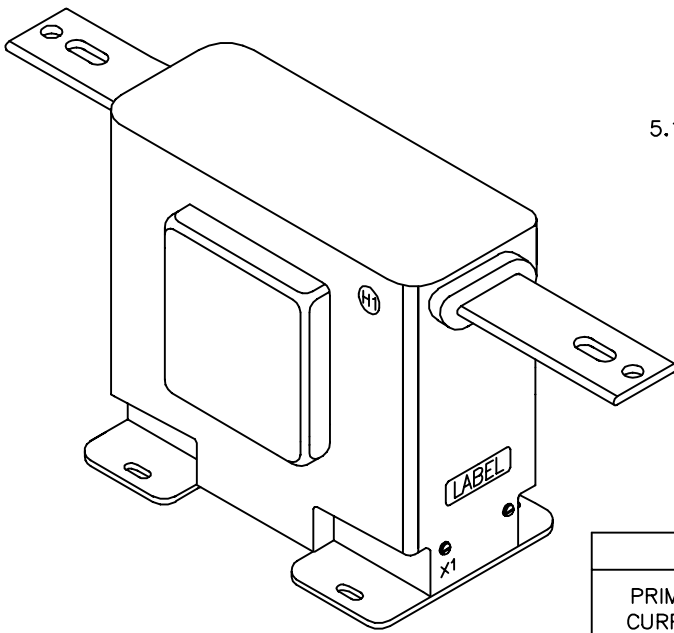
15.5kV, BIL 110kV full wave.

CONTINUOUS THERMAL

CURRENT RATING FACTOR:

1.33 at 30°C. amb., 1.00 at 55°C. amb.

- Primary terminals are plated copper bars. See chart below for sizes.
- Secondary terminals are brass screws No. 10-32 with one flatwasher and lockwasher.
- Vacuum cast in polyurethane resin.
- The transformers are tested for partial discharge to Canadian Standards CAN3-C13-M83. This test can also be carried out to IEC requirements if requested.
- Approximate weight 76 lbs.



BAR SIZE		
PRIMARY CURRENT	DIMENSION	
	A	B
5 TO 200A	0.25	1.50
300 TO 600A	0.38	2.00

CATALOG NUMBER **	CURRENT RATIO	RELAY CLASS	ANSI METERING CLASS AT 60 Hz					*THERMAL CURRENT RATING 1 SECOND RMS AMPS
			B0.1	B0.2	B0.5	B0.9	B1.8	
CTWH5-A-110-T150-050	5:5	T150	0.1	0.1	0.1	0.1	0.2	470
CTWH5-A-110-T150-100	10:5	T150	0.1	0.1	0.1	0.1	0.2	950
CTWH5-A-110-T150-150	15:5	T150	0.1	0.1	0.1	0.1	0.2	1440
CTWH5-A-110-T150-200	20:5	T150	0.1	0.1	0.1	0.1	0.2	1840
CTWH5-A-110-T150-250	25:5	T150	0.1	0.1	0.1	0.1	0.2	2670
CTWH5-A-110-T150-300	30:5	T150	0.1	0.1	0.1	0.1	0.2	2920
CTWH5-A-110-T150-400	40:5	T150	0.1	0.1	0.1	0.1	0.2	3700
CTWH5-A-110-T150-500	50:5	T150	0.1	0.1	0.1	0.1	0.2	4700
CTWH5-A-110-T150-750	75:5	T150	0.1	0.1	0.1	0.1	0.2	7575
CTWH5-A-110-T150-101	100:5	T150	0.1	0.1	0.1	0.1	0.2	12940
CTWH5-A-110-T150-151	150:5	T150	0.1	0.1	0.1	0.1	0.2	14375
CTWH5-A-110-T150-201	200:5	T150	0.1	0.1	0.1	0.1	0.2	25875
CTWH5-A-110-T150-301	300:5	T150	0.1	0.1	0.1	0.1	0.2	27520
CTWH5-A-110-T150-401	400:5	T150	0.1	0.1	0.1	0.1	0.2	40350
CTWH5-A-110-T150-601	600:5	T150	0.1	0.1	0.1	0.1	0.2	66225

* With a burden of 0.35 Ohms or greater connected to the secondary.

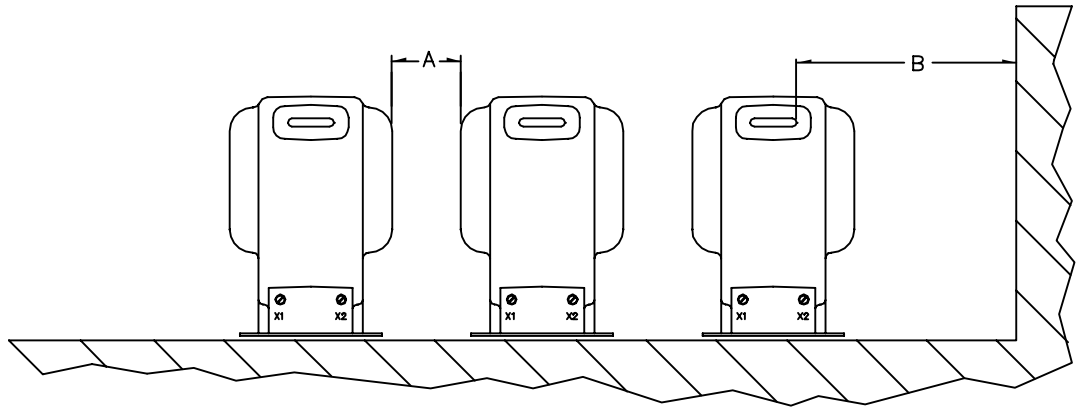
** A test card is provided with each unit.

CTWH5- A-110-T150

RECOMMENDED MINIMUM SPACINGS

A; Unit to Unit
= 1.50" minimum.

B; HV to Ground in Air
= 6.50" minimum.



Recommended spacings are for guidance only. User needs to set appropriate values to assure performance for high potential test, impulse test, high humidity, partial discharge, high altitude, and other considerations like configuration.

