



Integra 510 Three Phase Ammeter, Voltmeter and Frequency Meter

The Integra 510 generator set integrated power metering unit provides cost effective digital multifunction metering. Designed for continuous use in harsh environmental conditions, the unit typically replaces three conventional ammeters, a voltmeter, a selector switch and a frequency meter.

Integra 510 offers a simple two button interface for the measurement of up to nine electrical parameters, and programming of current transformer ratios up to 8000A. The high contrast large character LCD display provides readings for current per phase and system average, voltage per phase and system average, and system frequency.

Features

- Digital multi function metering
- Measurement of up to nine electrical parameters
- High accuracy
- Programmable CT ratios
- Self powered
- High contrast LCD display

Benefits

- Suitable for all sizes of generator
- Replaces numerous traditional analog meters
- Simple operation
- Significant cost savings
- Reduced wiring times

Measures and Displays

- Current L1, L2, L3 and system total
- Voltage phase to phase, voltage phase to neutral and system average
- System Frequency

Approvals

- Low Voltage Directive
- Electromagnetic Compatibility Directive IEC688, IEC1010-1

Specification

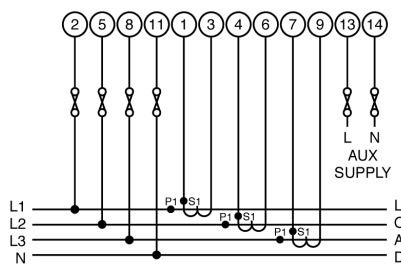
Accuracy:	±1.5% of nominal
Temp. Coefficient:	Typical 0.013% / °C
Input Configuration:	3 phase 4 wire or 3 phase 3 wire
Supply Voltage:	Line powered or auxiliary powered 190-240V AC, 380-480V AC
Input Voltage:	100-120V L-L, 190-240V L-L, 380-480V L-L
Input Current:	5 A CT operation (1A option). Ratio configurable to 8000 A. Internal configuration, CT commons connected to neutral
Voltage Measurement:	3 phase Line to Neutral & System (4 wire systems) 3 phase Line to Line (3 wire systems)
Current :	3 phase Line & System
Frequency:	45 -65Hz system
Burden:	Current: 0.6VA Voltage: 0.2VA Auxiliary powered and self powered: 3VA
Shock:	30g in 3 planes
Vibration:	10 – 55Hz (0.15mm)
Display:	High contrast LCD 4 digits per line 10.5mm high
Termination:	Screw clamp terminals
Operating Temperature:	-10°C to + 70°C
Mounting Installation:	Two corner clamps
Enclosure:	UL94V-0 flame retardant material
Dimensions:	96mm x 96mm x 105mm
Panel Cut Out:	92mm x 92mm
Compliant With:	LVD and EMC, IEC688, IEC1010-1
IP Protection:	IP54

Product Codes

244-513	3 phase, 3 wire. Please specify volts and current as required
244-514	3 phase, 4 wire. Please specify volts and current as required

Connections

3-PHASE 4-WIRE UNBALANCED LOAD



3-PHASE 3-WIRE UNBALANCED LOAD

